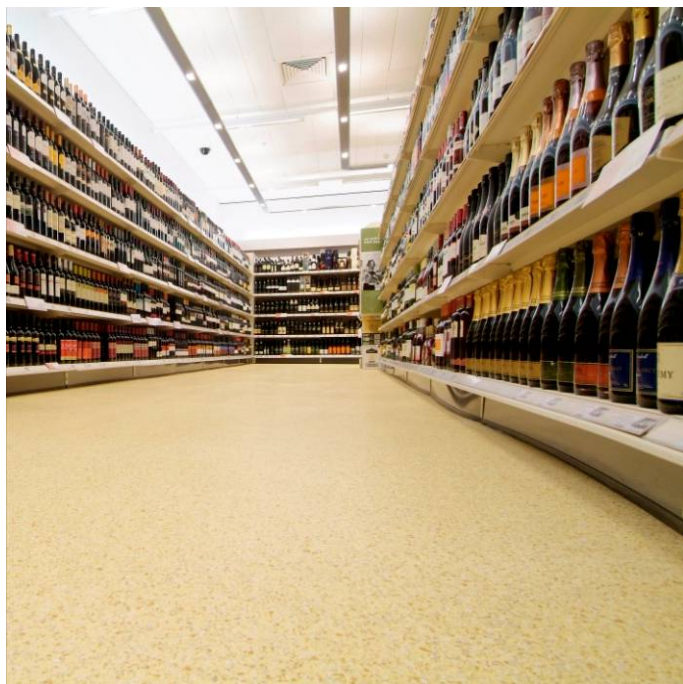


Flowfast Terrosso (4 mm)



Description

Flowfast Terrosso is a seamless, decorative, hard wearing acrylic resin floor finish, developed for high traffic retail environments. Flowfast Terrosso has been developed to enable very fast track applications, therefore dramatically reducing program time.

Uses

Ideal for public areas, shops and showrooms, department stores, designer outlets, airports, restaurants, garden centres, schools and hospitals.

Benefits:

- Attractive decorative finish
- Extensive design potential
- Seamless hygienic finish
- Easy to clean and maintain
- High chemical resistance
- High scratch resistance
- Wear resistant surface for wheeled traffic.
- Rapid installation
- Excellent resistance to UV light

Standard Terrosso colour chart



Dali



Van Gogh



Picasso



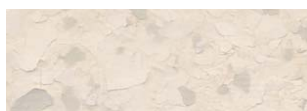
Klimt



Renoir



Matisse



Monet



Michelangelo



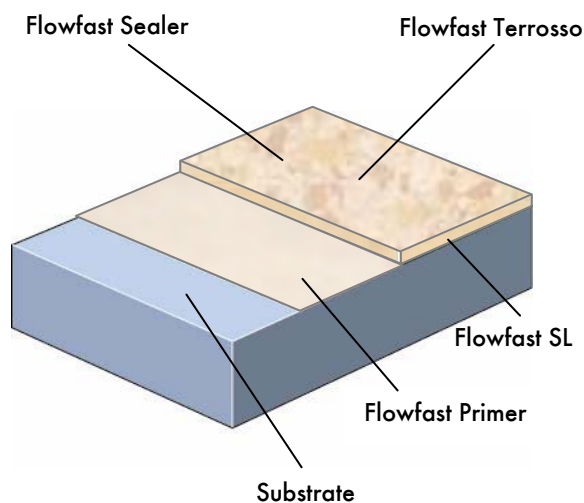
Da Vinci



Rembrandt

The applied colours may differ slightly from the examples shown above. Contact our customer services for a true colour sample or a special colour match. Special corporate colours and designs can be produced to special order.

System Design



Model Specification

Product: Flowfast Terroso

Finish: Satin

Thickness: 4 mm

Colour: _____

Preparatory work and application in accordance with manufacturers instructions.

Manufacturer: Flowcrete UK Ltd

Telephone: Customer Service - +44 (0) 1270 753000

Substrate Requirements

Concrete or screed substrate should be a minimum of 25N/mm², free from laitance, dust and other contamination. The substrate should be dry to 95% RH as per BS8204 and free from rising damp and ground water pressure.

A special Flowfast primer can be used for substrates up to 100% RH (surface dry).

Products Included in this System

Primer: Flowfast Primer @ 0.3-0.5 kg/m²

Scatter: Natural Quartz 0.4-0.8mm @ 0.3 kg/m²

Flowfast SL:

Flowfast Binder @ 1.5 kg/m² *mixed with:*

Flowfast Pigment Powder

@ 3% weight of Flowfast Resin

Flowfast SNL Filler @ 3.0 kg/m²

Scatter: Flowfast Flake @ 0.5 kg/m² (to excess)

Sealer: Flowfast Sealer @ 0.25 kg/m² per coat (3 coats)
to obtain a smooth surface

Consult individual Product Data sheets for information on Flowfast Catalyst levels.

Graded aggregate can be incorporated in the sealer to provide better slip resistance.

Detailed application instructions are available upon request.

Installation Service

The installation should be carried out by an approved contractor with a documented quality assurance scheme. Obtain details of our approved contractors by contacting our customer service team or enquiring via our web site www.flowcrete.com.

Focus on the Floorzone

Flowcrete Group plc are world leaders in specialist industrial and commercial flooring. Systems available include: underfloor heating systems, floor screeds, surface damp proof membranes, decorative floor finishes, seamless terrazzo, car park deck waterproofing, corrosion resistant systems... to name just a few. Our objective is to satisfy your Floorzone needs.

Important Note

Flowcrete's products are guaranteed against defective materials and manufacture and are sold subject to its standard Terms and Conditions of Sale, copies of which can be obtained on request.

Technical Information

The figures that follow are typical properties achieved in laboratory tests at 20°C and at 50% Relative Humidity.

Slip Resistance (SRV)	Method described in BS 7976-2 (typical values for 4-S rubber slider) Dry 50 (min) Wet 20 (min) With graded aggregate incorporated :- Dry 60 (min) Wet 50 (min)
Impact Resistance	ISO6272 1 kg weight >1.8 m 2 kg weight >1.5 m
Abrasion Resistance	BS 8204-2 Class AR2 - Medium duty industrial and commercial.
Temperature Resistance	Tolerant of sustained temperatures up to 50°C
Water Permeability	Nil - Karsten test. (impermeable)
Chemical Resistance	Good resistance to tea, coffee, cola, fruit juice, soaps and bleach
Bond Strength	Greater than cohesive strength of 25 N/mm ² concrete. > 1.5 MPa.

Complies with BS 8204-6/FeRFA type 4.

Speed of Cure (per layer)

Full traffic	1 hour
Full chemical cure	1 hour

Cure at ambient temperatures in the range -10°C to +35°C can be achieved by altering the quantity of catalyst used.

For applications below -10°C, please consult our Technical Department.

Aftercare - Cleaning and Maintenance

Clean floors regularly using a rotary scrubber in conjunction with a mildly alkaline detergent.

Life Expectancy

10 years, subject to correct maintenance regime.

Environmental considerations

The finished system is assessed as non-hazardous to health and the environment. The long service life and seamless surface reduce the need for repairs, maintenance and cleaning.

Environmental and health considerations are controlled during manufacture and application of the products by Flowcrete staff and fully trained and experienced contractors.

Further Information

To ensure you are specifying a fit for purpose flooring system for your project please consult our Technical Advisors on the number below or visit our website to register your interest in specifying one of the most durable floors on the market.