

Flowfresh ESD MF (4 mm)



Description

Flowfresh ESD MF is an antistatic 4 mm heavy duty, chemical resistant antimicrobial treated polyurethane resin floor finish. Attractive smooth matt coloured floor finish.

Uses

To provide an antistatic heavy duty, hard wearing floor finish with exceptional chemical resistance. Typical areas for use are wet and dry process areas where the floor is subjected to heavy traffic, impact and chemical attack.

Benefits

- Antistatic to BS 2050
- Contains Polygiene, an antimicrobial additive based on silver ion technology
- Very high chemical resistance
- Easy to clean and sterilise – minimal joints
- High abrasion resistance
- Low odour during application

Standard colour chart



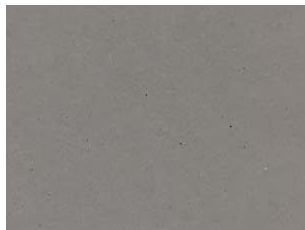
Mustard



Red



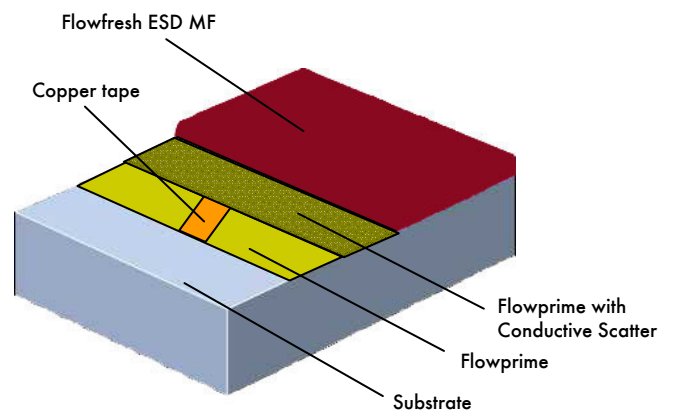
Dark Green



Mid Grey

The applied colours may differ slightly from the examples shown above. Contact our customer services for a true colour sample or a special colour match. Special corporate colours and designs can be produced to special order.

System Design



Model Specification

Product: Flowfresh ESD MF

Finish: Matt

Thickness: _____mm (4 mm)

Colour: _____

Preparatory work and application in accordance with supplier's instructions.

Supplier: Flowcrete UK Ltd

Telephone: Customer Service - +44 (0) 1270 753000

Installation Service

The installation should be carried out by a Flowcrete approved contractor with a documented quality assurance scheme.

Obtain details of our approved contractors by contacting our customer service team or enquiring via our web site www.flowcrete.com

Products Included in this System

Primer: Flowprime @ 0.25 kg/m²

Conductive Grid of 10 mm wide copper tape.

Primer: Flowprime @ 0.25 kg/m²

Scatter: Conductive Grade 50 @ ~2 kg/m²

Test electrical resistance when primer has cured.

Topping: Flowfresh ESD MF (density 1.9 kg/l) @ 7.6 kg/m²

Flowfresh ESD MF is a self-sealing finish.

Detailed application instructions are available upon request.

Focus on the Floorzone

Flowcrete Group plc are world leaders in specialist industrial and commercial flooring. Systems available include: underfloor heating systems, floor screeds, surface damp proof membranes, decorative floor finishes, seamless terrazzo, car park deck waterproofing, corrosion protection systems... to name just a few.

Our objective is to satisfy your Floorzone needs.

Microbial / Fungal Resistance

The Polygiene antimicrobial additive incorporated into Flowfresh ESD MF provides control of most bacteria and fungi which come into contact with the floor.

Substrate Requirements

Concrete or screed substrate should be a minimum of 25N/mm², free from laitance, dust and other contamination. The substrate should be dry to 75% RH as per BS 8204 and free from rising damp and ground water pressure. If no damp proof membrane is present Hydraseal DPM can be incorporated directly beneath the Flowfresh ESD MF system.

Environmental considerations

The finished system is assessed as non-hazardous to health and the environment. The long service life and seamless surface reduce the need for repairs, maintenance and cleaning.

Environmental and health considerations are controlled during manufacture and application of the products by Flowcrete staff and fully trained and experienced contractors.

Conductive Grid

A network of 10 mm wide, self-adhesive, conductive copper tape is always recommended in combination with any Flowcrete antistatic flooring system. The copper tape must be applied directly onto the cured Flowprime, 150mm in from the perimeter of the application. A further grid of tape should be applied within this area at 3 m centres. Special attention should be paid to tape areas passing over expansion or bay joints to ensure permanent electrical continuity. The applied tape matrix should be secure and fully bonded to a confirmed earth point.

Technical Information

The figures that follow are typical properties achieved in laboratory tests at 20 °C and at 50% Relative Humidity.

Electrical Resistance	5 x 10 ⁴ - 1 x 10 ⁶ Ohms (to BS 2050)
Fire Resistance	BS 476 Part 7
	Spread of Flame: Class 2 (indicative)
	Method described in BS 7976-2
Slip Resistance	(typical values for 4-S rubber slider)
(dependent upon texture achieved during laying)	Dry >60 Wet >35
Impact Resistance	BS 8204 Part 1 Cat: A (<0.5mm)
	ISO 6272 1 kg weight >1.8m
	2 kg weight >1.5 m
Temperature Resistance	Tolerant up to 70 °C
Water Permeability	Nil - Karsten Test (impermeable)
Vapour Permeability	ASTM E96:90
	5 g / m ² / 24hrs (at 4 mm thick)
Chemical Resistance	Go to www.flowcrete.com
	Excellent resistance to sugars and most acids (organic and inorganic)
Abrasion Resistance	ASTM D4060 Taber Abrader:
	30mg loss per 1000 cycles
	(1kg load using H22 wheels)
	BS 8204-2: Class AR2
Compressive Strength	> 50 N/mm ² (BS 6319)
Flexural Strength	20 N/mm ² (BS 6319)
Tensile Strength	12 N/mm ² (BS 6319)
Bond Strength	Greater than cohesive strength of 25N/mm ² concrete. > 1.5 MPa.

Complies with BS 8204-6/FeRFA category 7.

Speed of Cure

	10 °C	20 °C	30 °C
Light traffic	36 hrs	24 hrs	12 hrs
Full traffic	72 hrs	48 hrs	24 hrs
Full chemical cure	10 days	7 days	5 days

Aftercare - Cleaning and Maintenance

Clean regularly using a single or double headed rotary scrubber drier in conjunction with a mildly alkaline detergent.

Life expectancy

7 - 10 years, dependant on thickness and subject to correct maintenance regime.

Important Note

Flowcrete's products are guaranteed against defective materials and manufacture and are sold subject to its standard Terms and Conditions of Sale, copies of which can be obtained on request.

Further Information

To ensure you are specifying a fit for purpose flooring system for your project please consult our Technical Advisors on the number below or visit our website to register your interest in specifying one of the most durable floors on the market.

Flowcrete UK Ltd

The Flooring Technology Centre Booth Lane

Sandbach Cheshire CW11 3QF UK.

Tel: +44 (0) 1270 753000 Fax: +44 (0) 1270 753333

Email: uk@flowcrete.com

Flowcrete UK Ltd is a subsidiary of Flowcrete Group plc

www.flowcrete.com