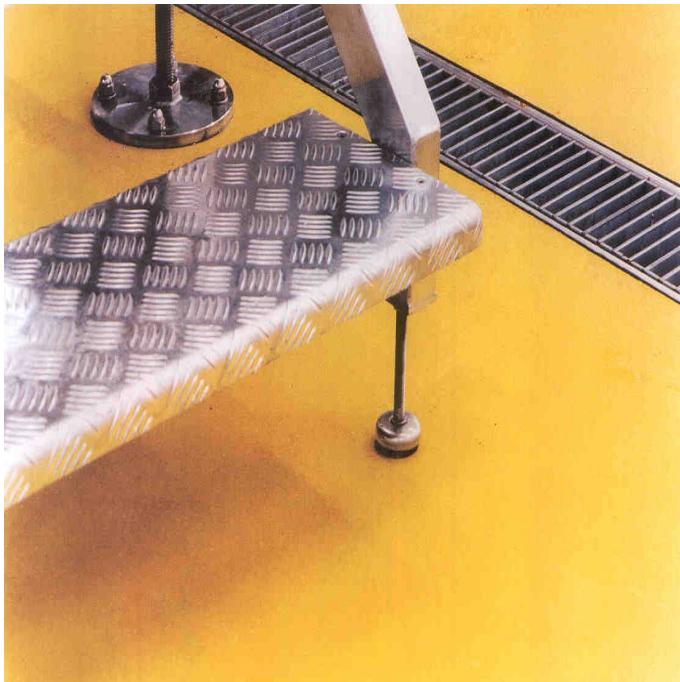


Flowfresh HF (6 - 9 mm)



Description

Flowfresh HF is a 6 - 9 mm heavy duty, chemical resistant antimicrobial treated polyurethane resin floor screed. Attractive fine textured coloured floor finish with a speckled effect on the surface.

Uses

Ideal for wet processing zones such as food manufacturing, food preparation areas, and chemical processing plants.

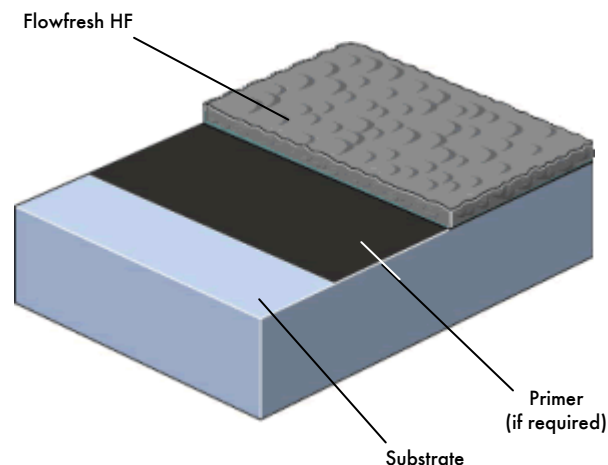
Benefits

- Contains Polygiene, an antimicrobial additive based on silver ion technology
- Very high chemical resistance
- Easy to clean and sterilise anti-slip surface, minimal joints
- Heat resistant to 120°C
- Steam cleanable
- Non tainting, non dusting
- High abrasion resistance
- Withstands high mechanical stress
- Good alternative to expensive acid resistant tiles
- Low odour during application
- Positive slip resistance

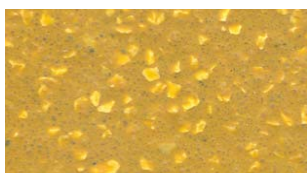
Project References

Food: Nestlé, McVities, Courage Brewery, Grants Whisky, also Meat, Fish and drinks industry.
Pharmaceutical: Astra Zeneca, Pfizer, Bayer, GlaxoSmithKline, Levers and many more.

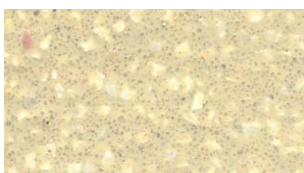
System Design



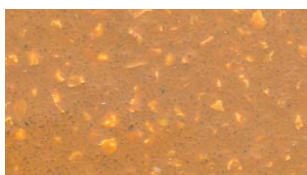
Standard colour chart



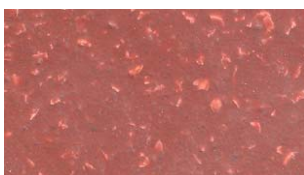
Ochre



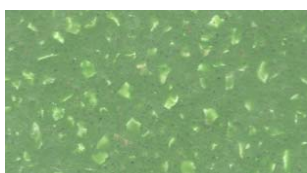
Cream



Mustard



Red



Dark Green



Mid Grey

The applied colours may differ slightly from the examples shown above. Contact our customer services for a true colour sample or a special colour match.

Model Specification

Product: Flowfresh HF

Finish: Matt

Thickness: _____mm (6 or 9 mm)

Colour: _____

Preparatory work and application in accordance with suppliers instructions. Supplier: Flowcrete UK Ltd

Telephone : Customer Service - +44 (0)1270 753000

Substrate Requirements

Concrete or screed substrate should be a minimum of 25N/mm², free from laitance, dust and other contamination. The substrate should be dry to 75% RH as per BS8204 and free from rising damp and ground water pressure. If no damp proof membrane is present, Hydraseal DPM can be incorporated directly beneath the Flowfresh HF system.

Products Included in this System

Primer: Flowprime @ 0.25 kg/m²

OR, where a dpm is required,

Hydraseal DPM @ 0.5 kg/m²

OR, where high heat resistance is critical,

Flowfresh Primer @ 0.25 kg/m²

Topping: Flowfresh HF (Density 2.1 kg/l)

@ 12.6 kg/m² for 6 mm

@ 18.9 kg/m² for 9 mm

Flowfresh HF is a self-sealing finish.

Detailed application instructions are available upon request.

Installation Service

The installation should be carried out by a Flowcrete approved contractor with a documented quality assurance scheme.

Obtain details of our approved contractors by contacting our customer service team or enquiring via our web site

www.flowcrete.com

Life expectancy

7 - 10 years, dependant on thickness and subject to correct maintenance regime.

Flowfresh HF is not colour fast and may change colour over time (exhibits a yellowing effect). Colour change depends on the UV light and heat levels present and hence the rate of change cannot be predicted. This is more noticeable in light colours and blues but does not compromise the product's flexibility or chemical resistance characteristics. We have endeavoured to adopt colours within our standard range which minimise this change.

Microbial / Fungal Resistance

The Polygiene antimicrobial additive incorporated into Flowfresh HF provides control of most bacteria and fungi which come into contact with the floor.

Focus on the Floorzone

Flowcrete Group plc are world leaders in specialist industrial and commercial flooring. Systems available include: underfloor heating systems, floor screeds, surface damp proof membranes, decorative floor finishes, seamless terrazzo, car park deck waterproofing, corrosion protection systems... to name just a few. Our objective is to satisfy your Floorzone needs.

Flooring Design Service

Special corporate colours and designs can be produced to special order.

System Performance Guide

Complies with BS 8204-6/FeRFA type 8.

Technical Information

The figures that follow are typical properties achieved in laboratory tests at 20°C and at 50% Relative Humidity.

Fire Resistance	BS476:Part 7 Surface Spread of Flame: Class 2
Slip Resistance Pendulum Slip Test method described in BS 7976-2	Dry >80 Wet >40 (dependent upon texture achieved during laying)
Impact Resistance	BS8204-1 Cat: A (<0.5mm) ISO6272 1 kg weight >1.8 m 2 kg weight >1.5 m
Temperature Resistance	Tolerant up to 120°C intermittent spillages or constant 105°C dry heat (at 9mm thickness)
Water Permeability	Nil - Karsten test (impermeable)
Vapour Permeability	ASTM E96:90 3 g/m ² /24hrs (at 9mm thick)
Chemical Resistance	Go to www.flowcrete.com Excellent resistance to sugars and most acids (organic and inorganic)
Abrasion Resistance	ASTM D4060 Taber Abrader: 25mg loss per 1000 cycles (1kg load using H22 wheels) BS8204-2: Class AR2
Compressive Strength	> 50 N/mm ² (BS6319)
Flexural Strength	20 N/mm ² (BS6319)
Tensile Strength	10 N/mm ² (BS6319)
Bond Strength	Greater than cohesive strength of 25 N/mm ² concrete. > 1.5 MPa.

Speed of Cure

	10°C	20°C	30°C
Light traffic	36 hrs	24 hrs	12 hrs
Full traffic	72 hrs	48 hrs	24 hrs
Full chemical cure	10 days	7 days	5 days

Aftercare - Cleaning and Maintenance

Clean regularly using a single or double headed rotary scrubber drier in conjunction with a mildly alkaline detergent.

Environmental considerations

The finished system is assessed as non-hazardous to health and the environment. The long service life and seamless surface reduce the need for repairs, maintenance and cleaning. Environmental and health considerations are controlled during manufacture and application of the products by Flowcrete staff and fully trained and experienced contractors.

Important Note

Flowcrete's products are guaranteed against defective materials and manufacture and are sold subject to its standard Terms and Conditions of Sale, copies of which can be obtained on request.

Further Information

To ensure you are specifying a fit for purpose flooring system for your project please consult our Technical Advisors on the number below or visit our website to register your interest in specifying one of the most durable floors on the market.

Flowcrete Group plc
Booth Lane Moston Sandbach,
Cheshire CW11 3QF
UK
Tel:+44 (0) 1270 753000
Fax:+44 (0) 1270 753333
Email:uk@flowcrete.com

Flowcrete Europe Ltd
Booth Lane Moston Sandbach
Cheshire CW11 3QF
UK
Tel:+44 (0)1270 753000
Fax:+44 (0)1270 753333
Email:uk@flowcrete.com

Flowcrete Asia Sdn Bhd
Lot 37631 & 37632 Jalan 6/37A
Taman Bukit Maluri
Industrial Area Kepong,
52100 Kuala Lumpur, Malaysia
Tel: +60 3 6277 9575
Fax: +60 3 6277 4645
Email:malaysia@flowcrete.com

Flowcrete North America, Inc.
11133 I-45 South
Suite J, Conroe
Texas 77302
U.S.A.
Tel:+1 936 539 6700
Fax:+1 936 539 6701
Email: usa@flowcrete.com

Flowcrete
for the world at your feet